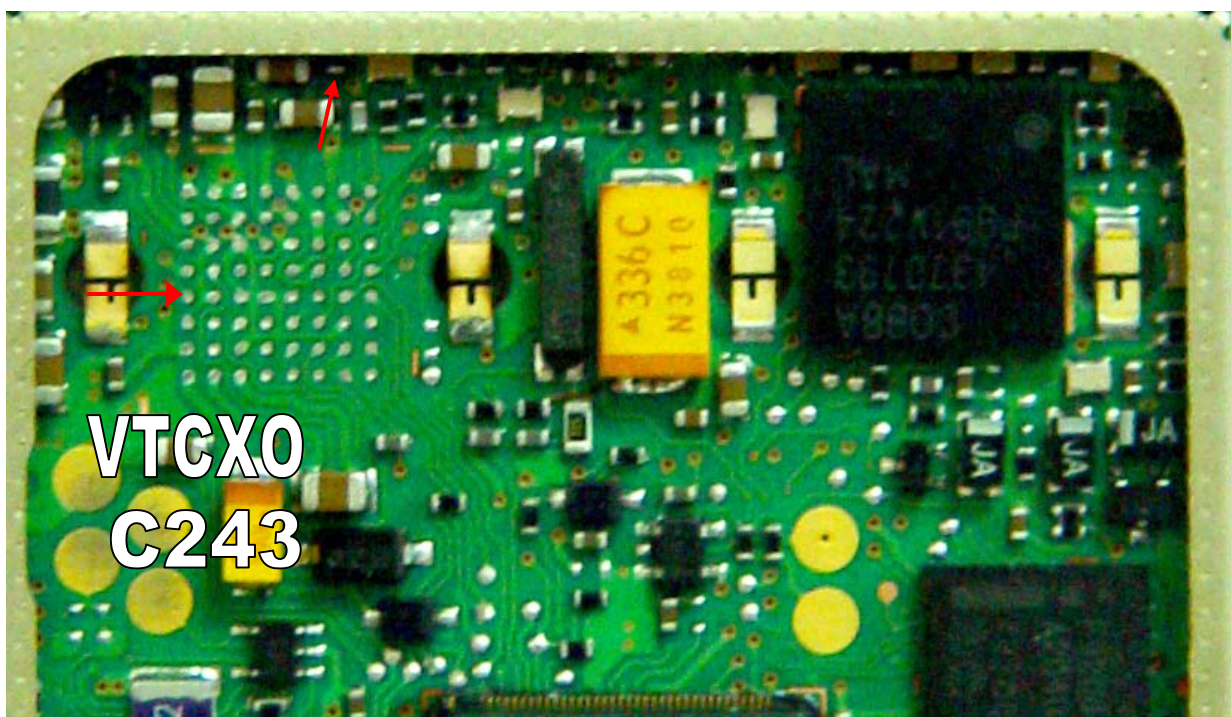
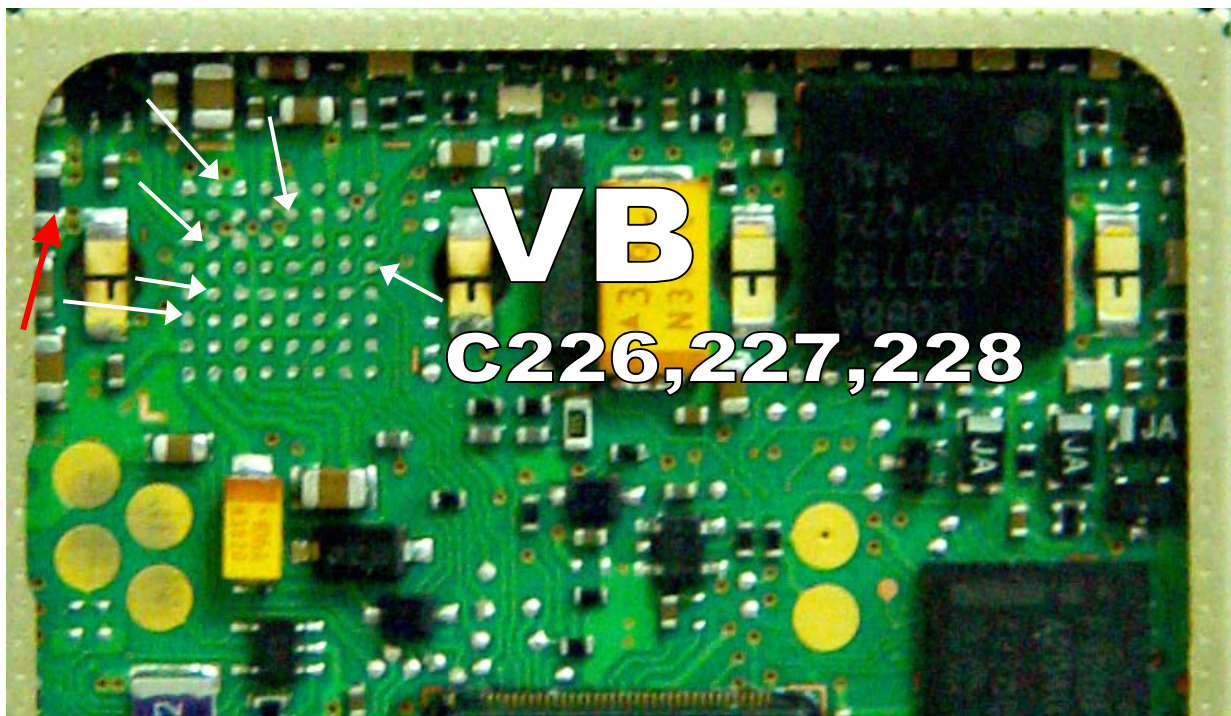
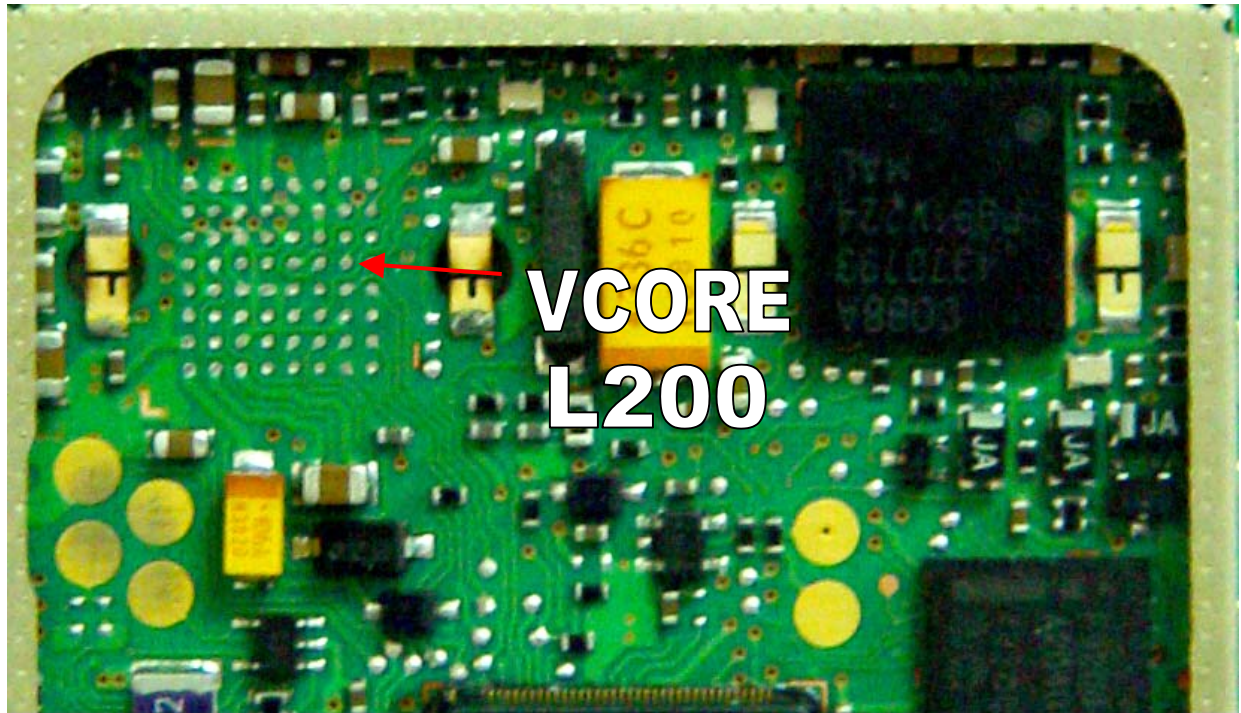


# จุดต่อลายวงจร

## ไฟ ภาค BASEBAND

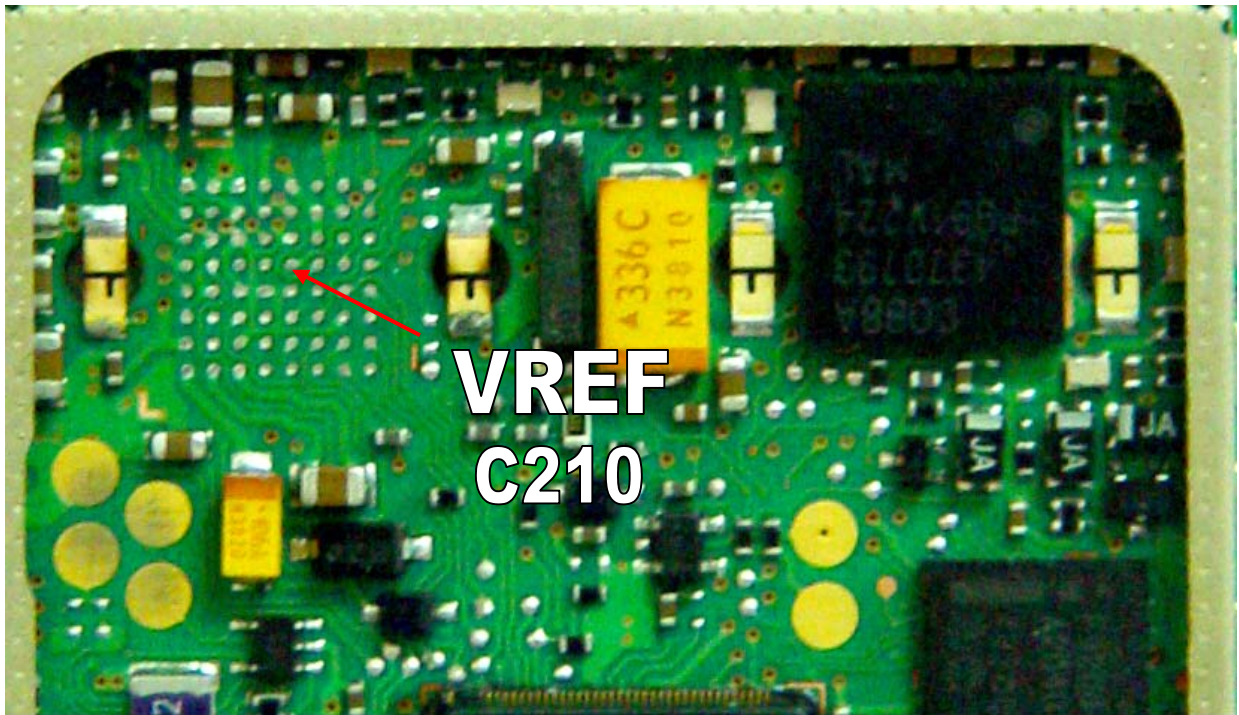
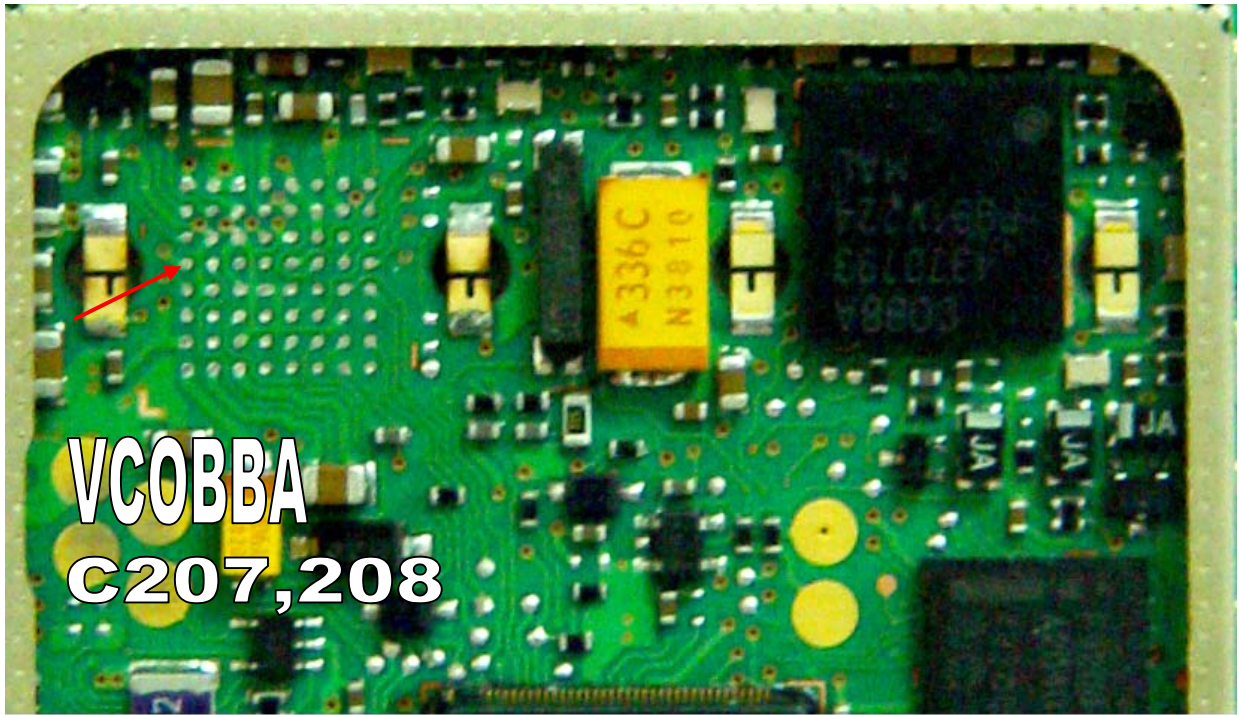


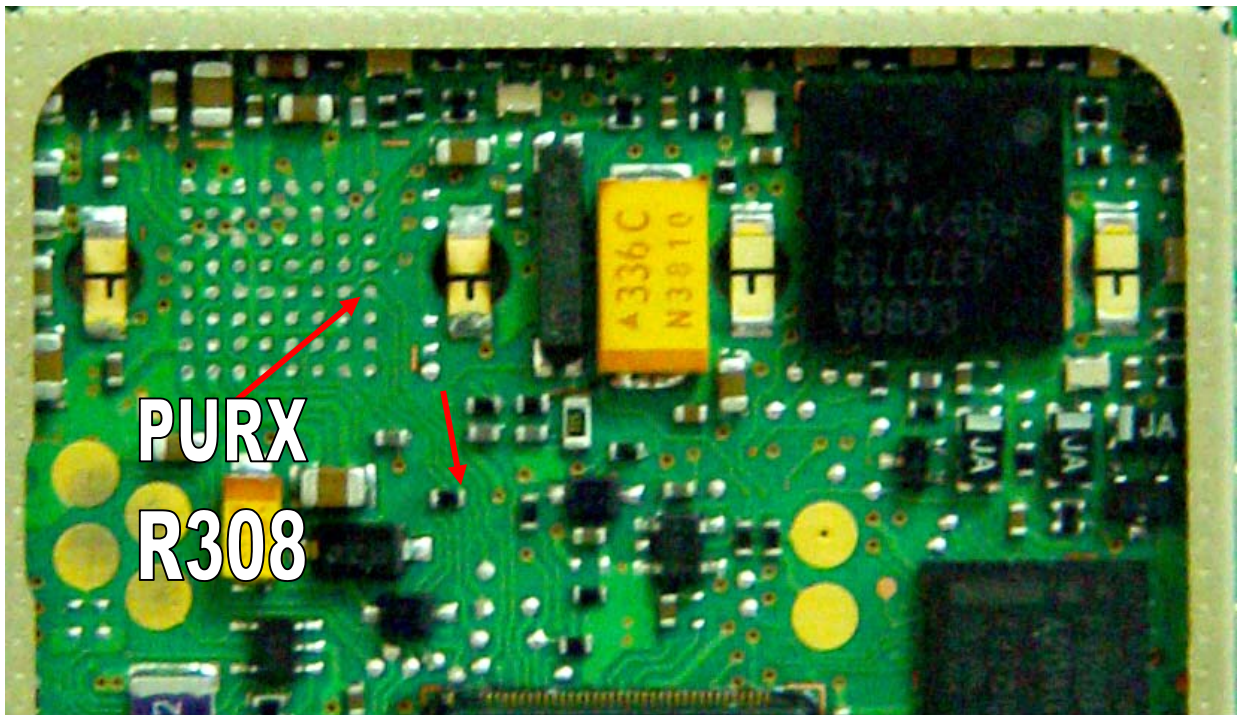


**Vcore  
L200**



**VBB  
C209,211**



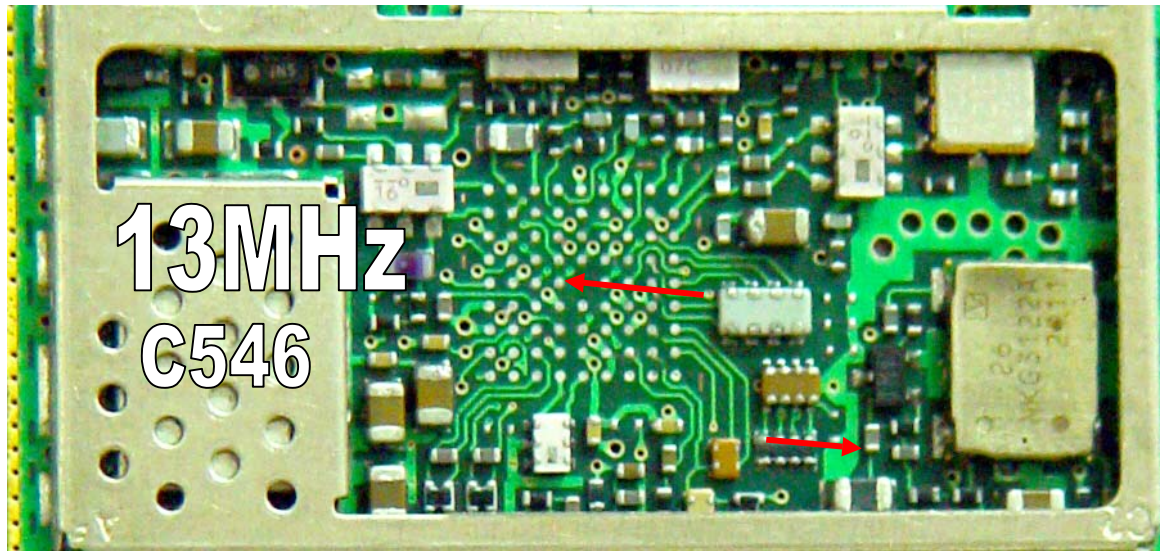
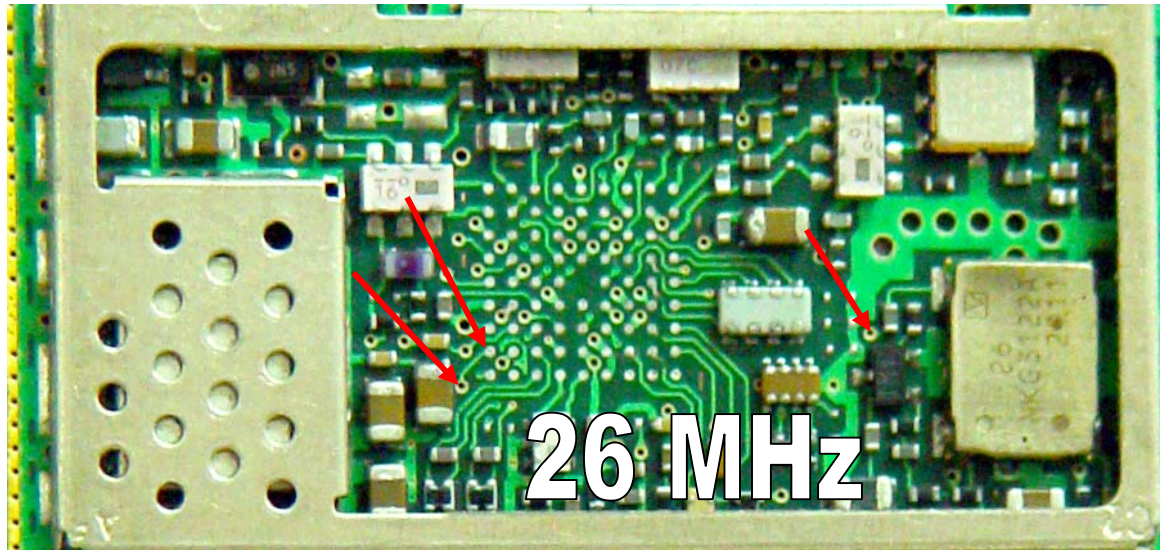




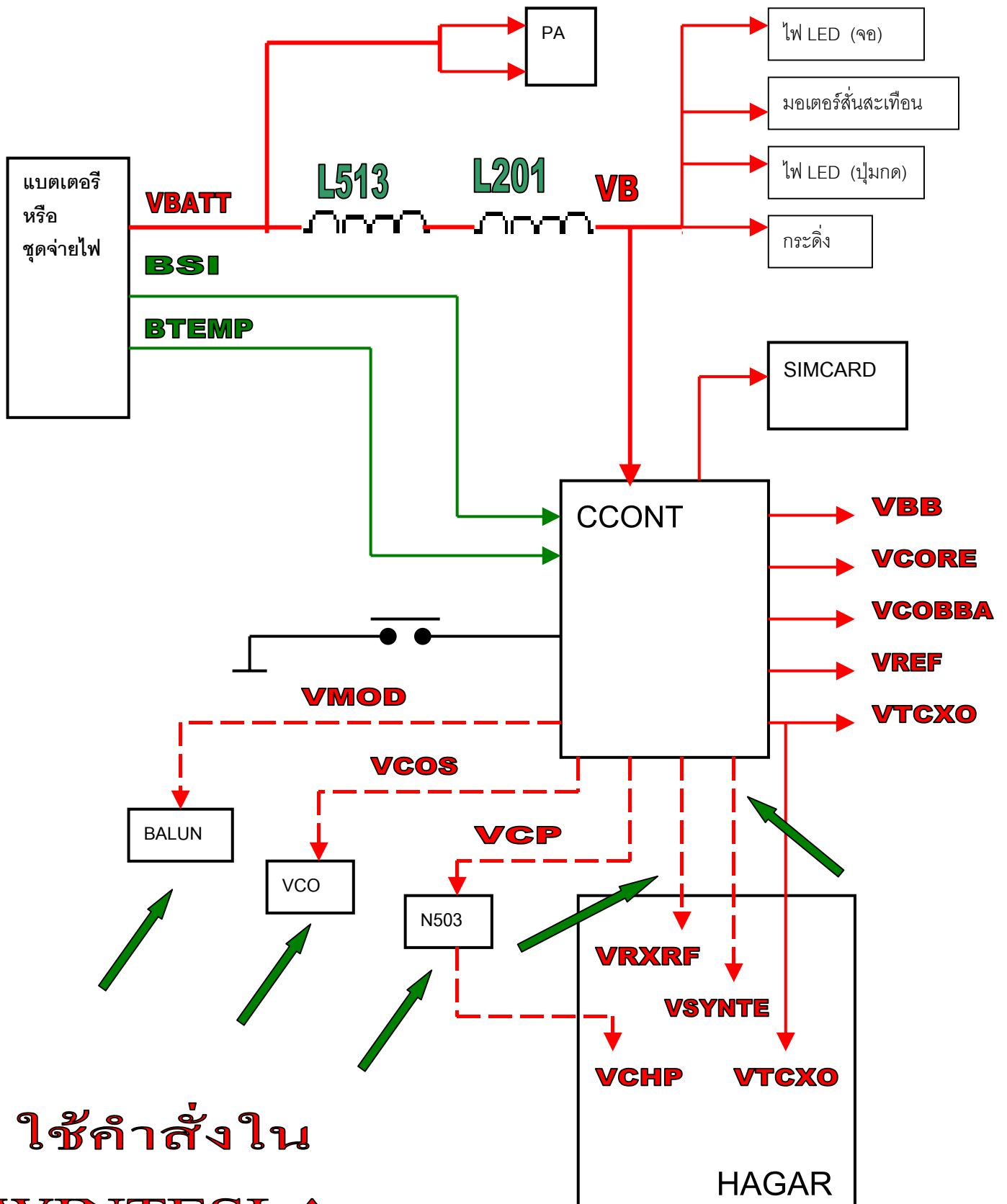
**SLEEP CLOCK**  
**32.768 KHz**



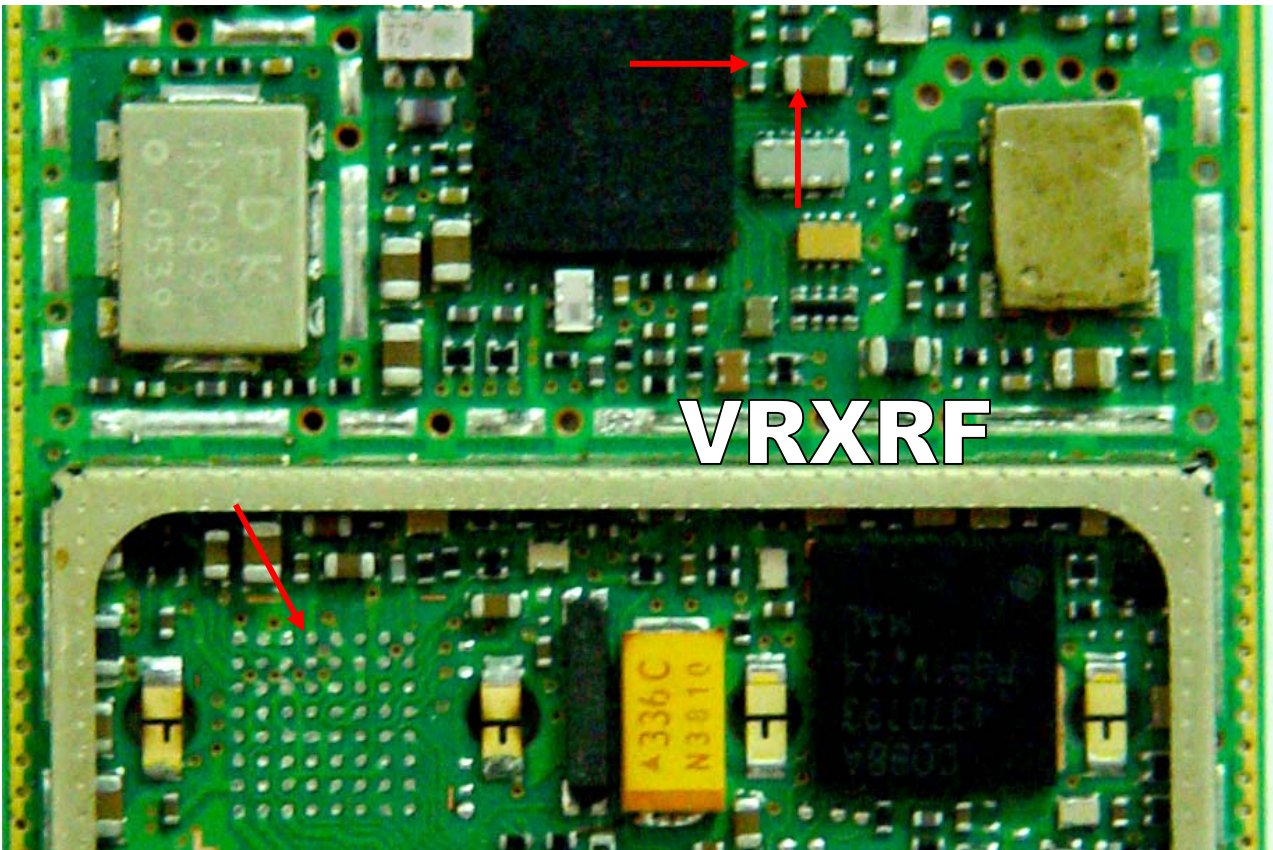
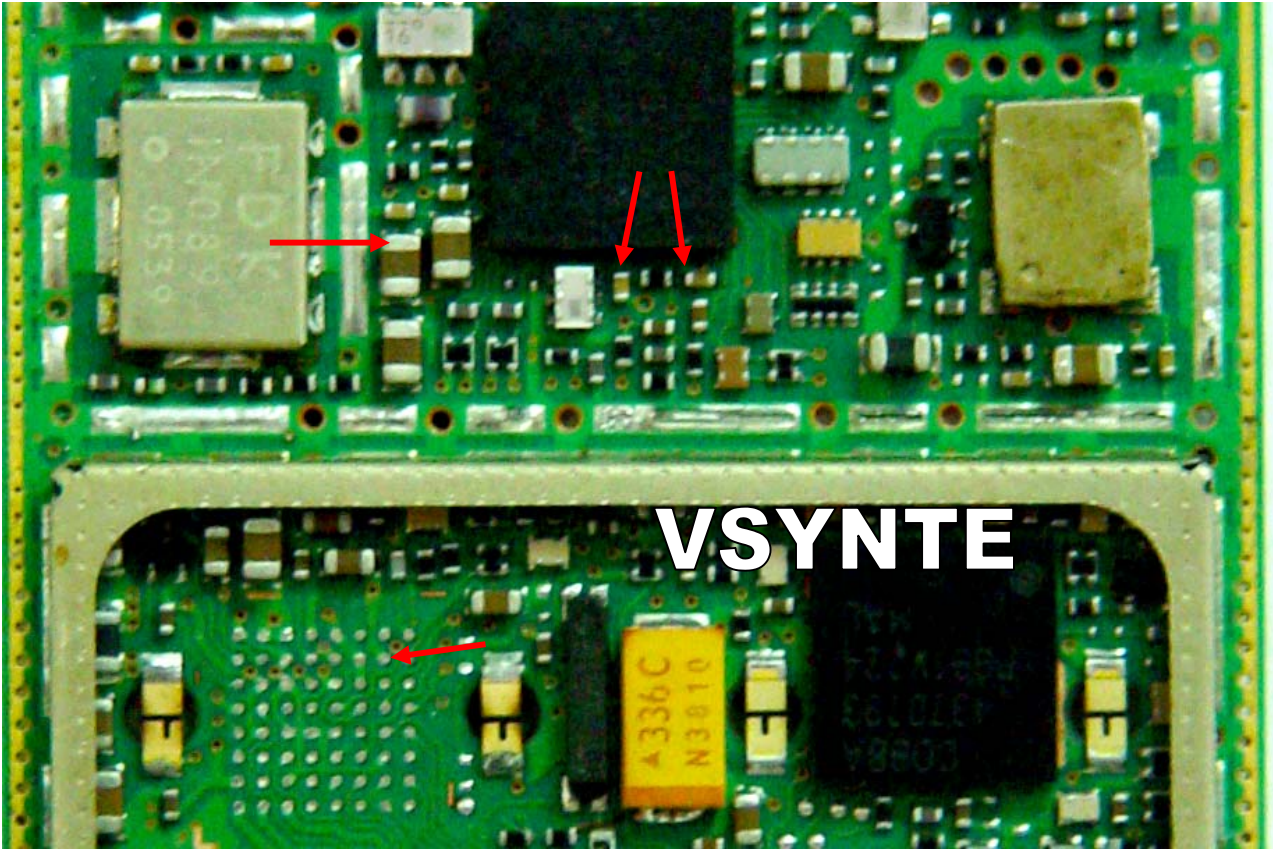
**POWER ON-OFF**  
**R 224,402**



# ไฟที่จ่ายให้กับภาควิทยุ

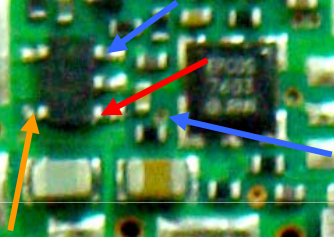


ใช้คำสั่งใน  
**WINTESLA**





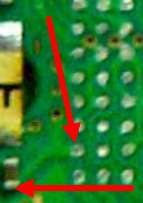
**HAGAR RESET**



**VCHP**



**VCP**



A336C  
N3910

